

# Shoreline Industries



FULL LINE PRODUCT CATALOG





TABLE OF CONTENTS:

Why Choose Shoreline Industries.....3

PolyDock.....4-5

ShorePort.....6-7

Shoreline Dock.....8-9

Dock Accessories.....10-11

Cantilever Lift.....12-13

Vertical Lift.....14-15

Canopies.....16-17

Lift Motors.....18-19

Lift Accessories.....20-21

Recreation.....22-23

# Why Shoreline Industries?

Shoreline Industries is more than just a dock and lift manufacturer; it is one of the most experienced waterfront equipment brands in the industry. We provide reliable, durable and economical equipment for all types of waterfront enthusiasts. At Shoreline Industries we strive to provide products that improve the waterfront experience of anyone who uses them. Shoreline Industries has a line-up of residential docks and lifts suitable for just about any waterfront environment.

## WHAT DOES THIS MEAN FOR YOU?

It means you can rest assured knowing that your waterfront equipment will be ready for use every time you hit the water. Our team is as passionate about the water as you are so they understand how valuable your recreation time is and they work everyday to make sure you have products to make the most out of it. Each product is tested by our team to ensure your safety and product quality. Plus our easy installation and low maintenance products not only save you time but money as well. From our aluminum docks and lifts to our floating PolyDock and ShorePorts we've got you covered.





# PolyDock

Imagine using your dock system all year long without ever having to take time out of your weekend to adjust it for changing water depths. The PolyDock floating dock system allows you to enjoy your dock and use your waterfront without additional maintenance and seasonal adjustments. PolyDock is extremely stable because its modular design is essentially the dock flotation and the dock frame combined into one attractive structure. This means that each dock section provides the flotation for the entire dock system. The modular design allows you to configure your dock any way you like while allowing you to easily change the configuration as your needs change. This saves you time and money because only minimal assembly is required to create your perfect floating dock system. PolyDock will look good on any waterfront, from residential properties to resorts and campgrounds because its brick patterned surface is attractive and slip resistant. PolyDock is perfect for deep or fluctuating water, or where you have an extremely soft or muddy lake bottom.

## SPECIFICATIONS & GENERAL INFORMATION

PolyDock is a modular, rotationally molded, polyethylene floating dock system designed to look great in your waterfront application, and provide you with exceptional value for years. The recessed areas on the bottom of each PolyDock section help to provide stability between the dock and the surface of the water. This means less movement as you walk the length and width of your dock system. PolyDock is designed to feel firm underfoot along the length and width of its slip-resistant brick patterned surface, so you and your entire family can enjoy a day spent on your PolyDock.



## DOCK SIZES AVAILABLE:

Dock Size	Weight
3' x 10'	200 lbs
4' x 6'	160 lbs
4' x 10'	265 lbs
5' x 10'	340 lbs
6' x 8'	330 lbs
Corner	70 lbs

## ACCESSORIES:

Dock Bench	Canoe/ Kayak Rack	Pivoting Ladder
Dock Bumpers	Dock Bumper	Ramps
Gangways	Fishing Rod Holder	Telescoping Flag Pole
Poly Tires	Flag Pole Holder	
Accessory Connector	Handrail	
	Hinges	







# ShorePort

Save yourself time with Shoreline Industries' PWC port. ShorePort's design is time tested, and proven to make launching and loading your PWC super quick and super easy. Three adjustable rollers conform to just about any PWC hull style, while allowing you to set them up perfectly for the way you like to load and launch your craft. Because the ShorePort is so dependable and easy to use, it is a favorite for both individual personal watercraft owners, resorts, and marinas that provide PWC rental. An attractive textured surface means you can access your PWC from either the port or starboard side and an 8" cleat allows you to secure your craft for extended storage. You'll get a lot more use out of your personal watercraft with a ShorePort floating PWC lift, whether you own just one, two or rent out an entire fleet of them.

## SPECIFICATIONS & GENERAL INFORMATION

ShorePort's one-piece rotationally molded design provides a water tight, dependable platform for quick and easy PWC storage. Weighing in at just 260 pounds, the ShorePort is easy to get into position and simple to maneuver around when reconfiguring your dock system. ShorePort can accommodate PWC's up to 1,150 pounds and with the addition of our supplemental flotation, the weight capacity of a ShorePort can quickly and easily be increased up to 1,350 pounds. Because ShorePort is a floating PWC lift, there is no need to adjust the ShorePort for fluctuations in water depth, so you'll have more time to ride your PWC.



## ANCHORING & ATTACHMENT OPTIONS:

ShorePort to PolyDock Front Connector  
ShorePort to ShorePort Side Front Connector  
ShorePort to ShorePort Notched Side Front Connector  
ShorePort to ShorePort Side Rear Connector  
Flexi-Hinge Assembly  
Heavy Duty Pipe Bracket with Connector  
2" Schedule 40 Pipe  
Medium Pipe Bracket (works best on side of ShorePort)  
ShorePort Rear Pipe Bracket (small)  
Heavy Duty Pipe Bracket with Chain Guide  
Stand-off Bracket



## LIFT SPECIFICATIONS:

Model	Capacity	Width	Actual Weight
1150	1,150-1,350 lbs*	58"	260 lbs

\*With supplemental flotation.







# Shoreline Dock

The Shoreline dock was designed with the do-it-yourselfer in mind. You can assemble and install a Shoreline dock just like the pros do it, quickly and easily, to save your family time and money. The Shoreline dock is not only very affordable, it's extremely lightweight, which means you won't struggle to assemble it, or move it around. Its one-piece, solid side rail looks luxurious too, so your neighbors will envy your dock shopping savvy! You'll feel good about making a smart investment for enjoying your waterfront property, and you'll save money doing it. The Shoreline dock is perfect for shallow, to moderately deep waterfront locations, and can be used as a standing or wheel-in style dock system.

## SPECIFICATIONS & GENERAL INFORMATION

Shoreline dock sections are incredibly lightweight. Their welded, all aluminum design takes advantage of aluminum center stringers and aluminum strap cross-bracing to create a rigid, yet lightweight dock frame. The dock frame design allows the decking panels to be recessed into the frame for an attractive and secure fit. Multiple leg support options such as standing legs with welded pads, or wheel-end legs, are available for the Shoreline dock so you can have the exact dock you need for your waterfront property.





## DOCK SIZES AVAILABLE:

4' x 10' Frame

## COMMON CONFIGURATIONS:

4' x 20' Standing

4' x 30' Standing

4' x 20' Wheel-In

4' x 30' Wheel-In

4' x 20' Standing w/ 8' L

4' x 20' Standing w/ 8' L

4' x 20' Wheel-In w/ 8' L

4' x 30' Wheel-In w/ 8' L

## ACCESSORIES:

Dock Bench

Dock Bumper

Pivoting Ladder

Dock Steps

Telescoping Flag Pole



## DECKING OPTIONS

Left to Right: Cedar, Titan



# Dock Accessories



## **CORNER DOCK BOX:**

Our attractive dock box is a great way to store life jacket's, ski ropes, etc. without giving up a tremendous amount of precious dock space. Engineered to fit on the corner of most dock.



## **CORNER DOCK BUMPER:**

Shoreline's corner dock bumper provides additional protection for your boat against accidental scratches.



## **DOCK LADDER:**

Getting in and out of the water has never been easier with Shoreline's dock ladder. Enhance your waterfront with a pivoting ladder from Shoreline.





#### **DOCK STEPS WITH HANDRAIL:**

Shoreline's dock steps with hand rail are a great accessory for swimming. They are the perfect choice for children and adults who want to get in and out of the water quickly, easily and safely.



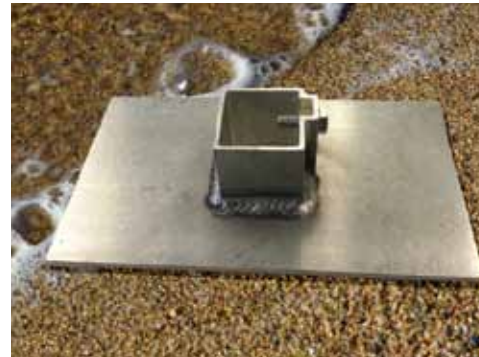
#### **POLY TIRE:**

Our 24" poly tires have side ventilation chambers which fill with water to help anchor your dock and drain when removing your dock from the water. These rugged poly tires have rigid sidewalls that won't go flat.



#### **POLY LOG:**

Our poly logs will help protect your boat. Made with a durable polystyrene material, these poly logs will help keep your dock and boat safe for years to come.



#### **DETACHABLE FOOT PADS:**

Shoreline's detachable foot pads help to stabilize and level your dock system. With the detachable foot pads you can remove them for convenient storage during the winter months.



#### **VERTICAL DOCK BUMPER:**

Dock bumpers are a perfect way to protect your boating investment. Our vertical dock bumpers will protect your watercraft above and below the water.

#### **OTHER DOCK ACCESSORIES TO CHECK OUT:**

CLAMPS  
LEG POCKET  
NYLON ROPE LADDER

SHORELINE TO DOCK HINGE  
SPLICE PLATE

# Cantilever Lift

Ruggedness is forged from simplicity, at least in the case of Shoreline Industries' Cantilever boat lifts, it is. Considering the amount of abuse and the environmental conditions that these lifts have endured in nearly half a century of dependable use, you can understand why our design hasn't changed much over the years. One stainless steel cable, three brass pulleys, and relentless attention to weld quality are what Shoreline Industries gives to you in every cantilever boat lift that we produce for you. Our Cantilever Boat Lifts offer unparalleled protection for your boat or pontoon because they are so simple, rugged and effective. Shoreline Industries cantilever boat lifts are your simple choice for lake bottoms that are firm to muddy, and shallow to moderately deep water depth.

## SPECIFICATIONS & GENERAL INFORMATION

Shoreline Industries Cantilever Boat Lifts have changed very little since their original design and manufacture decades ago. Because our Cantilever Boat Lift uses just one cable, we outfit each one with the best stainless steel cable available. A stainless steel cable ensures a long service life and less worry of cable breakage so your lift is always ready to do its job. The strength and durability of brass pulleys provides smooth and effortless lifting action. High quality, professional welds throughout the aluminum frame keep your cantilever lift solid and square at critical connection points. Where required, Shoreline Industries uses only stainless steel and brass hardware to reduce or eliminate the potential for loose or corroded nuts and bolts. The important pivot points between the lift frame and the lift rack are protected with bushings to provide the strength and longevity that our Cantilever Boat Lifts are known for.





## ACCESSORIES:

Canopy  
Canopy Legs  
Carpeted Bunks  
Guides  
Motor Stop  
Pontoon Rack

Pontoon Rail Kit  
Pontoon Motor Stop  
Universal Wheel Kit  
Wheel Drive Boat Lift Motor

## LIFT SPECIFICATIONS:

Model	Weight Capacity	Inside Width	Lift Weight	Actual Weight	Standard Leg Length	Overall Width	Winch Model	Optional Canopy L/W
1055 SL	1,000 lbs	55"	28"	85 lbs	24"	63"	DL 1202	N/A
1284 SL	1,200 lbs	84"	32"	190 lbs	36"	92"	DL 1202	N/A
2096 SL	2,000 lbs	96"	40"	290 lbs	36"	108"	DL 2503	22' x 96"
25108 SL	2,500 lbs	108"	40"	305 lbs	36"	120"	DL 2503	22' x 108"
25120 SL	2,500 lbs	120"	40"	320 lbs	36"	132"	DL 2503	24' x 120"



# Vertical Lift

Shoreline Industries' vertical boat lift is the most versatile in terms of the type of lake bottom and water depth that it can be used in and its versatility doesn't end there. You won't find an easier or smarter choice for

boat storage than a vertical boat lift from Shoreline. Shoreline Industries' vertical boat lifts can accommodate just about any style boat or pontoon hull so when paired with a Shoreline canopy it's an easy investment to make

to protect your boat on the water. You simply can't go wrong with a vertical boat lift from Shoreline.

## SPECIFICATIONS & GENERAL INFORMATION

Shoreline Industries' team of professional welders infuse quality and workmanship into every inch of weld to deliver you an extremely sturdy boat lift that you can be confident will protect your boat. A time-tested combination of a galvanized cables and brass sheaves means you won't need to spend your hard-earned recreation time replacing cables or worn pulleys. To give you even more peace of mind, Shoreline uses plated hardware where fasteners are a part of the design.





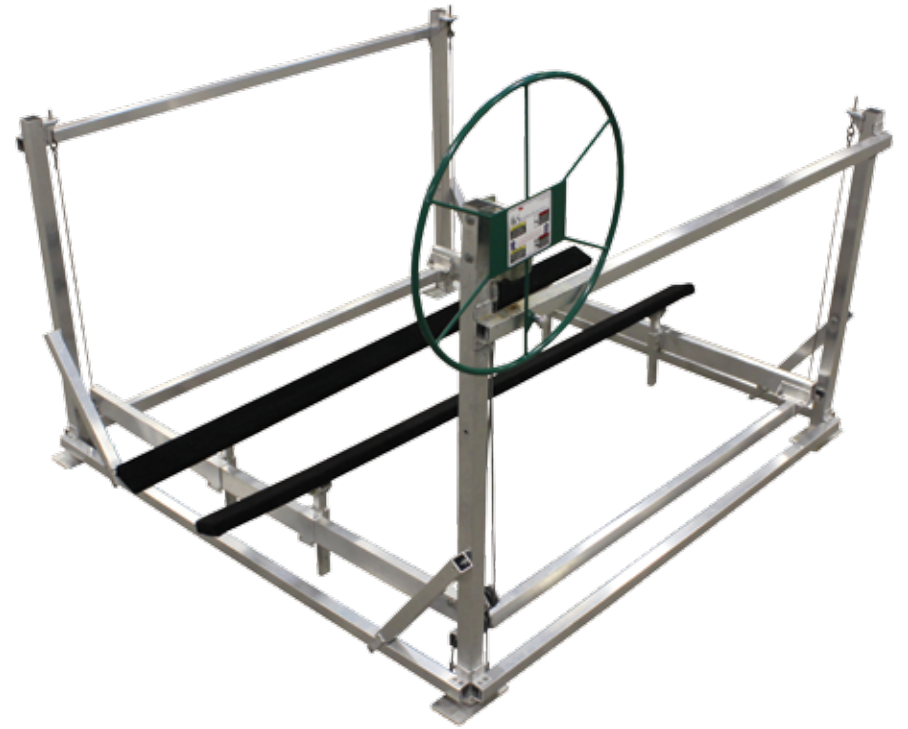
## ACCESSORIES:

Canopy  
Canopy Legs  
Carpeted Bunks  
Guides  
Motor Stop  
Pontoon Rack

Pontoon Rail Kit  
Pontoon Motor Stop  
Universal Wheel Kit  
LiftMate

## LIFT SPECIFICATIONS:

Model	Weight Capacity	Inside Width	Standard Leg Length	Overall Width	Lift Travel	Winch Model	Optional Canopy L/W
1055 SL	3,000 lbs	107.5"	24"	119.75"	48"	DL 3503	22 x 108
1284 SL	4,000 lbs	119.5"	24"	119.75"	48"	DL 3503	24 x 120



# Canopies

A Boat Lift helps to protect your boat or pontoon from damage to its hull by getting it up, and out of the way of floating debris, marine organisms, and wind-driven waves. A canopy frame with a vinyl cover protects your boat from the damaging effects of the sun's ultra violet rays, and water logging caused by rain. It's an easy comparison to make when you examine

a boat that has been left out in the elements, and then examine a boat that has been protected by a canopy and see just how damaging the effects of sun and rain can be to a boat or pontoon's interior vinyl, carpet, and glass, and its exterior paint or gel coat. Imagine watching as a storm rolls in over the lake, and knowing inside that your boat or pontoon will remain safe and

dry because it is tucked snugly up into your Shoreline canopy frame. A boat lift canopy helps to protect your watercraft from the damaging effects of the sun, wind, and rain but not all canopies are created equally. You want to protect your investment with the very best canopy frames and covers on the market, and Shoreline provides just that.

## SPECIFICATIONS & GENERAL INFORMATION

Shoreline Industries canopy frames are hand-welded by our aluminum artisans for superior strength to provide you with long-term boat protection and to give you confidence that your canopy will withstand years of worry free service. The design of Shoreline Industries's aluminum canopy frame is ultra-deep with flat ends to protect both the interior and the exterior of your boat or pontoon from ultraviolet degradation and wind-driven rain. Four fully welded sections complete the structure of the frame and are fastened using stainless steel and brass hardware. This makes our canopy frame among the strongest and most durable that you'll find anywhere.





## VINYL COVER OPTIONS:



Gray

Green

Printed color swatches are not intended for matching purposes.  
Please see you local Shoreline Industries dealer for color samples.

## AVAILABLE CANOPY SIZES:

22' x 96"

22' x 108"

24' x 120"



# Lift Motors

Lift Motors from Shoreline Industries are the finishing touch on any boat lift. We manufacture all of our lift motors to be quiet, powerful, efficient and trouble free. By installing a boat lift motor on your lift, you'll be able

to enjoy your boat time and again, without the hassle of manually cranking a lift wheel around and around just to get your boat off and then back onto your lift. Boat lift motors from Shoreline Industries are simple to

install and even simpler to operate. Toggle switch units, as well as remote control units are available for just about any type of boat lift.

## SIDEWINDER

The Sidewinder Direct Drive allows you to remove the lift wheel and attaches directly to your boat lift's existing winch so you'll never need to crank a wheel to raise or lower your boat! The Sidewinder Direct Drive fits most major brands of boat lifts and works on lifts up to 7,000 lbs. The Sidewinder Direct Drive Boat Lift Motor is available in 110 volt and 12 volt models with an optional remote control unit available.

### AVAILABLE OPTIONS/ACCESSORIES:

- Remote Control Unit
- 110V/12V Battery
- Constant Pressure Switch (standard)
- Solar Panel with Bracket
- Battery Tray
- 20', 25', 30' Cable Leads



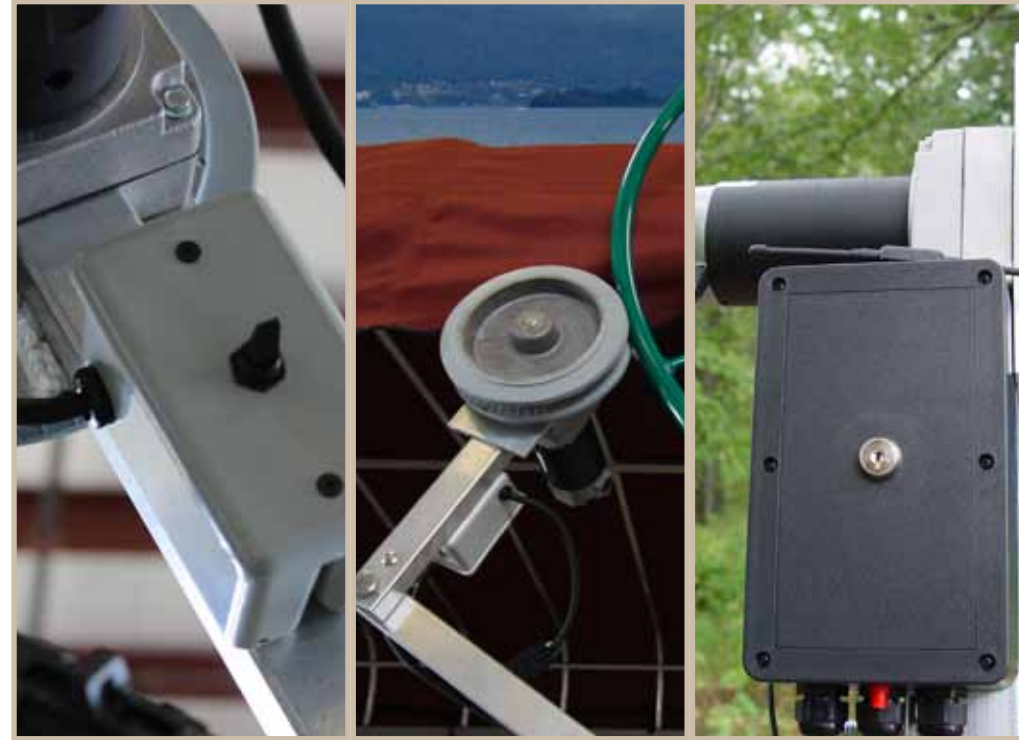


# LIFTMATE

Shoreline's Lift Mate Universal Wheel Drive Boat Lift Motor takes the work out of raising and lowering your boat on the boat lift. When you're on a tight budget but still want all the benefits of a boat lift motor, the Lift Mate from Shoreline is the perfect accessory! The Lift Mate Boat Lift Motor is available in 110 volt and 12 volt models and both come complete with mounting hardware to fit all boat lifts up to 5,000 lbs. A toggle switch unit is standard, but an optional remote control is available for push-button raising and lowering of your boat lift.

## AVAILABLE OPTIONS/ACCESSORIES:

- Remote Control Unit
- 110V/12V Battery
- Constant Pressure Switch (standard)
- Solar Panel with Bracket
- Battery Tray
- 20', 25', 30' Cable Leads
- Vinyl Motor Cover



# Lift Accessories



## **10 WATT SOLAR PANEL:**

Shoreline's 10 watt solar panel is great for 12-volt Sidewinder Direct Drive, Lift Mate Wheel Drive or to help your boat and ice-fishing house batteries maintain their charge.



## **BOAT LIFT LOFT:**

Shoreline's boat lift loft is a convenient way to store water toys, life jackets and other items that you want to get up and out of the way.



## **CARPETED BUNKS:**

Protect your boat with Shoreline's lift bunks. These bunks are a quick and inexpensive way to protect your investment from rubbing against metal parts of your dock or lift.





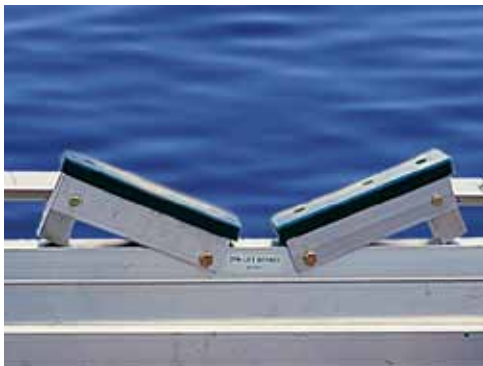
### **UNIVERSAL WHEEL KIT BRACKET:**

Our universal wheel kit bracket was designed to assist in the installation and removal of any lift. The wheel kit bracket is sold as a pair but does not include the poly tires.



### **PONTOON RACKS:**

Shoreline's aluminum racks are designed to provide a surface for your pontoon to rest on. Move the racks horizontally on the lift rack to fit your pontoon.



### **NON-ADJUSTABLE FRONT CRADLES:**

Shoreline has non-adjustable front cradles to accommodate your boating and lift needs. We manufacture cradles to support and protect your investment and keep you on the water all summer long.



### **VINYL MOTOR COVER:**

The vinyl motor cover is an inexpensive way to protect your Lift Mate. The vinyl motor cover fits over the Lift Mate motor unit for protection while allowing the Lift Mate to function as normal.



### **WINCH WHEEL:**

Our winch wheel is heavy-duty powder painted for easy operation with smooth spinning action. The strategically-placed ball bearing spinning knob assists in easy lowering and raising of your boat.

### **OTHER LIFT ACCESSORIES TO CHECK OUT:**

ADJUSTABLE CRADLES  
CABLES  
GUIDE  
LIFT LEGS

MOTOR STOP  
PULLEYS  
UNIVERSAL WHEEL KIT  
WINCHES

# Recreation



## **BEACHCOMBER™ LAKE RAKE:**

The Beachcomber Lake Rake utilizes a threaded lake system to help keep your waterfront beautiful and weed-free. Operation is simple, quick and most importantly safer on the environment.



## **RIP RAFT:**

The Shoreline Rip Raft is a 7.5' x 7.5' swim raft for people of all ages! This connectable swim raft is roto-molded for long-lasting durability and fun.



## **RIP RAFT SWIM LADDER:**

Get in and out of the water easier with the specially designed Rip Raft Ladder. Our Rip Raft ladder is available for purchase separately.





#### **RIP RAFT CONNECTOR:**

With the Shoreline Industries Rip Raft Connector piece, you can connect your Rip Rafts together and extend the enjoyment for everyone.



#### **ROCK JUMPING PLATFORM:**

The Rock Jumping Platform attaches quickly and easily to your Rip Raft and provides you with even more fun. The Rock Jumping Platform turns your Rip Raft into a play land.



#### **WATER SLIDE:**

Built to last and requiring very little maintenance our recreational slides come in two configurations and colors to choose from, you and your family can have endless hours of enjoyment.



#### **AMERICAN PRIDE FLAG POLE:**

American Pride flag poles are a great way to proudly display your patriotic colors. The American Pride flag poles come with a 3 x 5 standard American flag.



#### **FLAG POLES:**

With our flagpoles you can upgrade your flagpole a premium American flag and also purchase select NFL and state flags.

#### **OTHER RECREATION ITEMS TO CHECK OUT:**

TELESCOPING FLAG POLE



[WWW.SHORELINE-IND.COM](http://WWW.SHORELINE-IND.COM)

